

Snowman

Cover

SIA

$\text{♩} = 69$

Violine

Klavier

mp

mp

This system contains the first four measures of the piece. The Violine part starts with a whole rest for the first three measures, followed by a quarter rest and a quarter note in the fourth measure. The Klavier part features a steady eighth-note melody in the right hand and a bass line of dotted half notes in the left hand. A dynamic marking of *mp* is present in the fourth measure.

6

VI.

Klav.

This system contains measures 5 through 10. The Violin part continues with eighth-note patterns. The Piano part maintains the eighth-note melody in the right hand and the dotted half note bass line in the left hand.

11

VI.

Klav.

This system contains measures 11 through 15. The Violin part features a mix of eighth and quarter notes. The Piano part continues with the eighth-note melody in the right hand and the dotted half note bass line in the left hand.

16

VI.

Klav.

This system contains measures 16 through 20. The Violin part continues with eighth-note patterns. The Piano part continues with the eighth-note melody in the right hand and the dotted half note bass line in the left hand.

21

VI.

Klav.

Detailed description: This system contains measures 21 through 25. The VI. part is in a treble clef with a key signature of three flats (B-flat, E-flat, A-flat). It features a melodic line with eighth and sixteenth notes. The Klav. part consists of two staves: the right hand in a treble clef plays a steady eighth-note accompaniment, while the left hand in a bass clef plays a simple bass line with quarter and eighth notes.

26

VI.

Klav.

Detailed description: This system contains measures 26 through 30. The VI. part continues its melodic line, with a fermata over the final note of measure 28. A double bar line with a repeat sign (⌘) is placed at the end of measure 28. The Klav. part continues with the same accompaniment pattern as in the previous system.

31

VI.

Klav.

Detailed description: This system contains measures 31 through 35. The VI. part continues with eighth-note patterns. The Klav. part features a more active right hand with eighth-note runs, while the left hand maintains a steady bass line.

36

VI.

Klav.

Detailed description: This system contains measures 36 through 40. The VI. part concludes with a melodic phrase that ends in a fermata. The Klav. part continues with its accompaniment, ending with a final chord in the right hand and a sustained note in the left hand.

40

VI.

Klav.

44

VI.

Klav.

49

VI.

Klav.

52

VI.

Klav.

56

VI.

Klav.

59

VI.

Klav.

62

VI.

Klav.

67

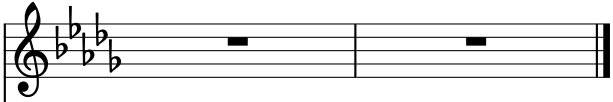
VI.

D.S. 3.

Klav.

76

VI.



Klav.

